



The Commons Sales Centre
3646 Innes Road, Orleans, ON K1C 1T1
sales@glenview.ca
613-316-1148



Discover more at glenviewhomes.com

Join us   



138 LUMEN PLACE, LOT 62A

The Woodland E

\$914,990

2,847 SQ. FT. |  4  2.5  2



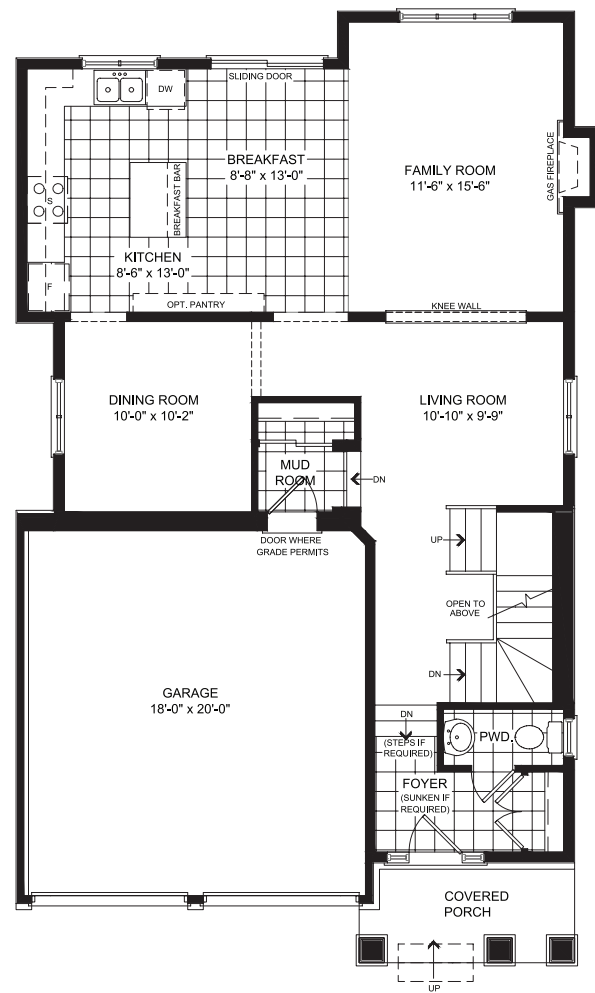
Copyright 2024 GLENVIEW HOMES. GLENVIEW and GLENVIEW HOMES and their related logos are registered trademarks used under license. Included features, specifications and options are subject to change without notice.

Please note that all interior finishes have been selected and no changes can be made at this time. All renderings are artist's concepts, size, materials and specification are subject to change without notice. Final product colours may vary slightly from images shown.

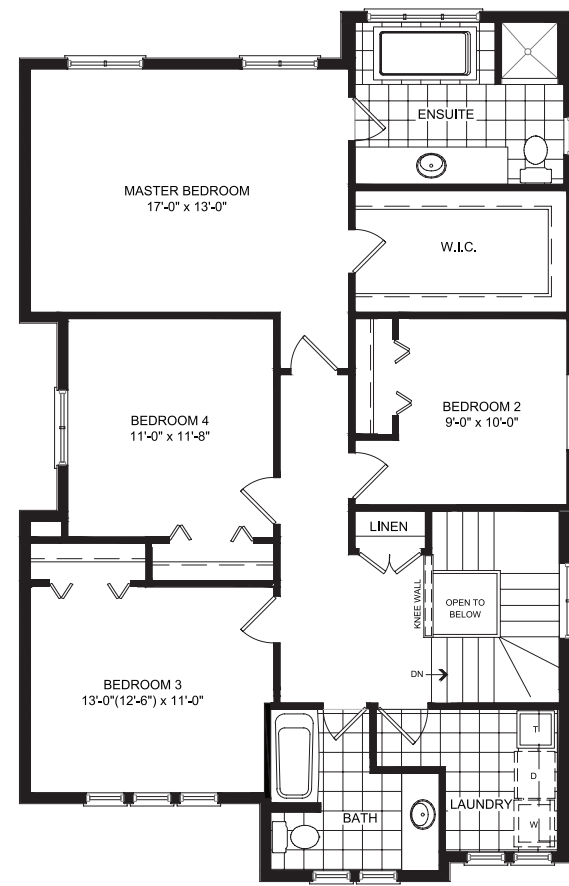
All dimensions provided are approximate and sizes and specifications are subject to change without notice. The floor plans and room dimensions shown apply to Elevation 'A' of this model type. Illustrations are artist's concepts only. Actual usable floor space varies from indicated floor areas. Square footages include finished space in the basement. THIS DISPLAY IS PROVIDED 'AS IS' WITHOUT WARRANTY OF ANY KIND, EITHER EXPRESSED OR IMPLIED, WARRANTIES OF MERCHANTABILITY, FITNESS FOR A PARTICULAR PURPOSE, OR NON-INFRINGEMENT. The information and specifications contained in this display are subject to change without notice and represent no commitment on our part in the future. All products and services are provided subject to applicable taxes and accompanying terms and conditions.

Despite the best efforts of Glenview Homes and its affiliates, officers, directors, employees or agents (collectively "we", "us" or "our" as circumstances warrant) to provide accurate information, including but not limited to prices and availability of homes or lots, it is regrettably not possible to ensure that all information contained in this display is correct. We do not warrant the accuracy and completeness of information, text, graphics or items contained in this display. E.&O.E. January 2024.

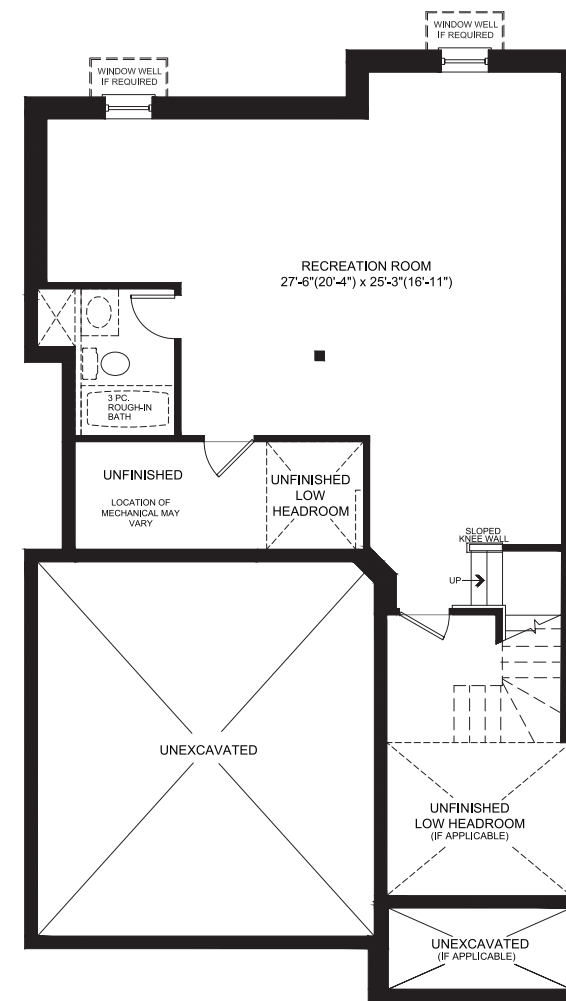
GROUND FLOOR



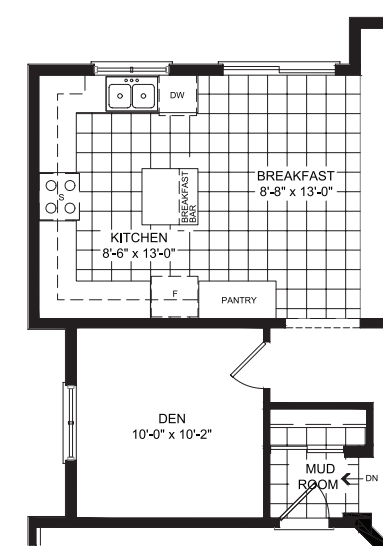
SECOND FLOOR



FINISHED BASEMENT



DEN AND KITCHEN



GROUND FLOOR DESIGNER FINISHES

- 1. Paint • 2. Hardwood • 3. Fireplace Tile • 4. Kitchen Quartz • 5. Kitchen Backsplash • 6. Main Floor Tile



SECOND FLOOR DESIGNER FINISHES

- 1. Paint • 2. Carpet • 3. Main Bathroom Tile • 4. Main Bath Quartz • 5. Master Ensuite Quartz • 6. Master Ensuite Floor/Tub Tile • 7. Master Ensuite Shower Tile



Step into Comfort and Style at 138 Lumen Place

This meticulously crafted move-in ready home, offers the following features that redefine modern living:

- Finished basement recreation room
- Den + kitchen layout featuring quartz countertops, a convenient water line for the fridge, and upgraded cabinetry
- Pot lights in the kitchen
- 9ft Smooth ceilings on the main floor
- Upgraded railing
- Master ensuite with quartz countertops, double sinks and an upgraded glass shower wall

